



*aim* Inc.

8F-7, No. 351, Sec. 2, ZhongShan Rd., ZhongHe Dist.,  
New Taipei City 23504, Taiwan (R.O.C.) <http://www.aimpor21.com>  
Tel : 886-2-3234-3370 Fax : 886-2-2226-0840

## USB Audio Q&A for Mac OS



aim Inc.

8F-7, No. 351, Sec. 2, ZhongShan Rd., ZhongHe Dist.,  
New Taipei City 23504, Taiwan (R.O.C.) <http://www.aimpor21.com>  
Tel : 886-2-3234-3370 Fax : 886-2-2226-0840

How to use AS372 and set to Multi-Channel Output? .....	3
How to setup audio output resolution? .....	6
How to setup optical output or input? .....	9

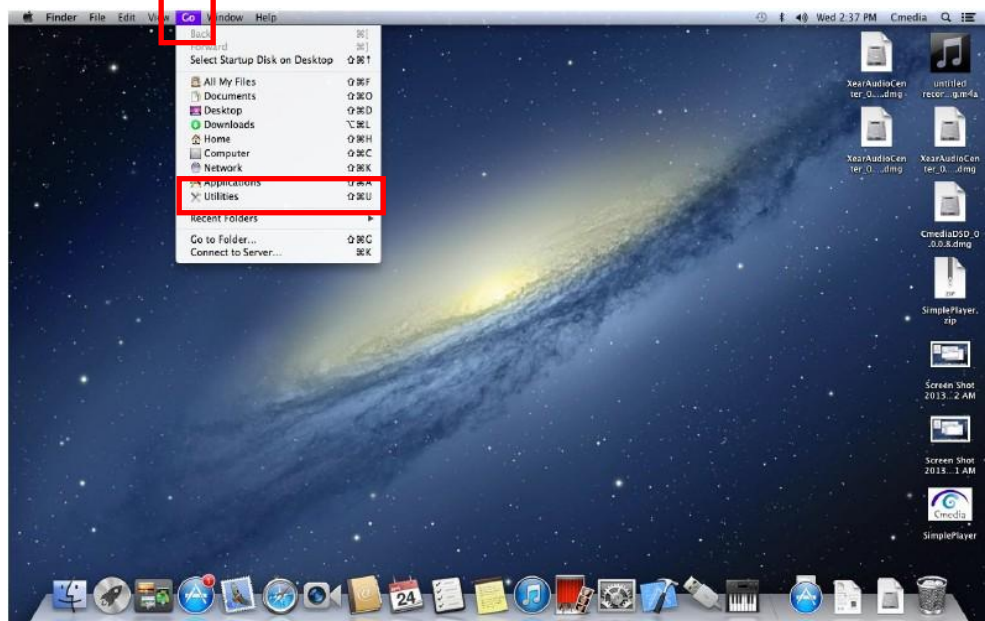


aim Inc.

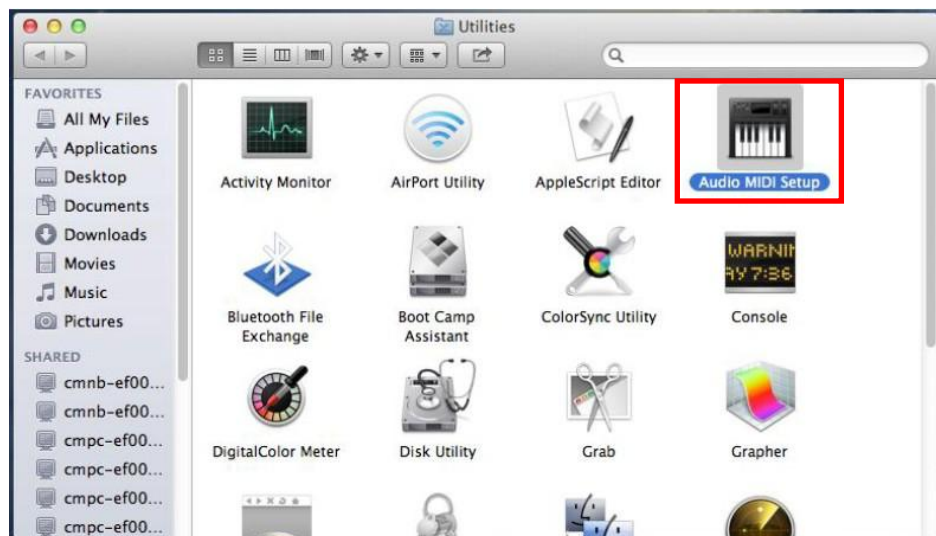
8F-7, No. 351, Sec. 2, ZhongShan Rd., ZhongHe Dist.,  
New Taipei City 23504, Taiwan (R.O.C.) <http://www.aimpor21.com>  
Tel : 886-2-3234-3370 Fax : 886-2-2226-0840

## How to use AS372 and set to Multi-Channel Output?

### 1. Go\Utilities



### 2. Choose Audio MIDI Setup

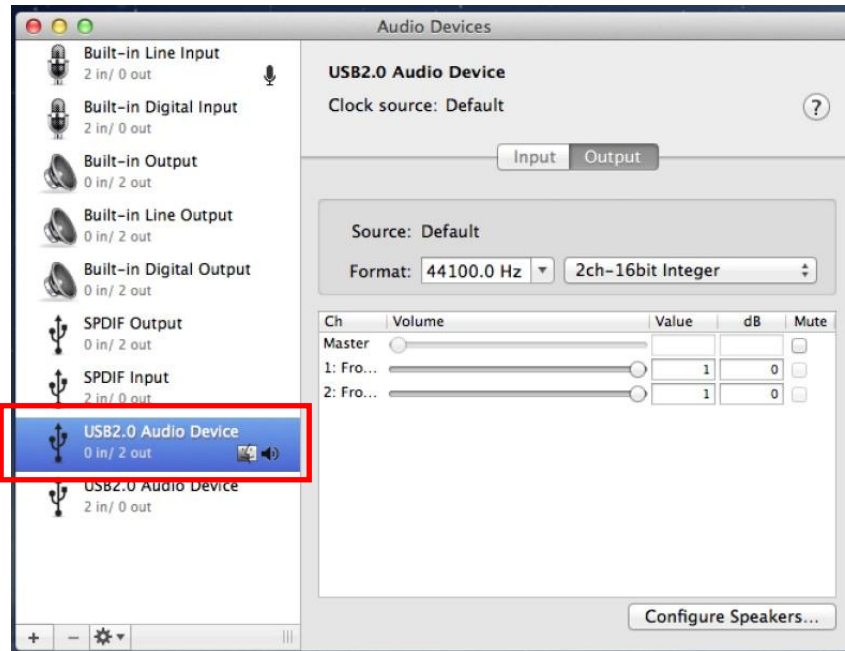




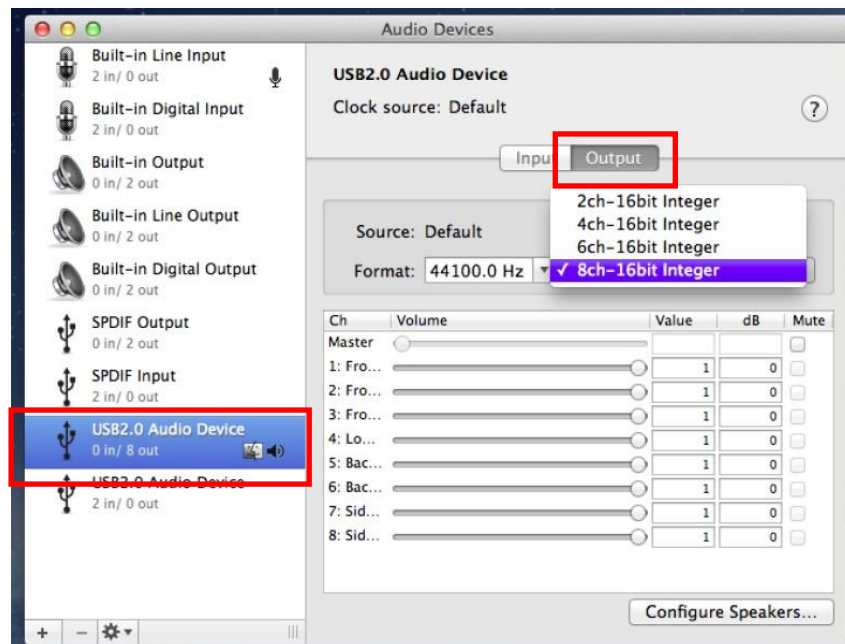
aim Inc.

8F-7, No. 351, Sec. 2, ZhongShan Rd., ZhongHe Dist.,  
New Taipei City 23504, Taiwan (R.O.C.) <http://www.aimpor21.com>  
Tel : 886-2-3234-3370 Fax : 886-2-2226-0840

3. Select audio device (such as USB2.0 Audio Device)



4. Choose 8ch-16bit Integer from Format item under Output selection

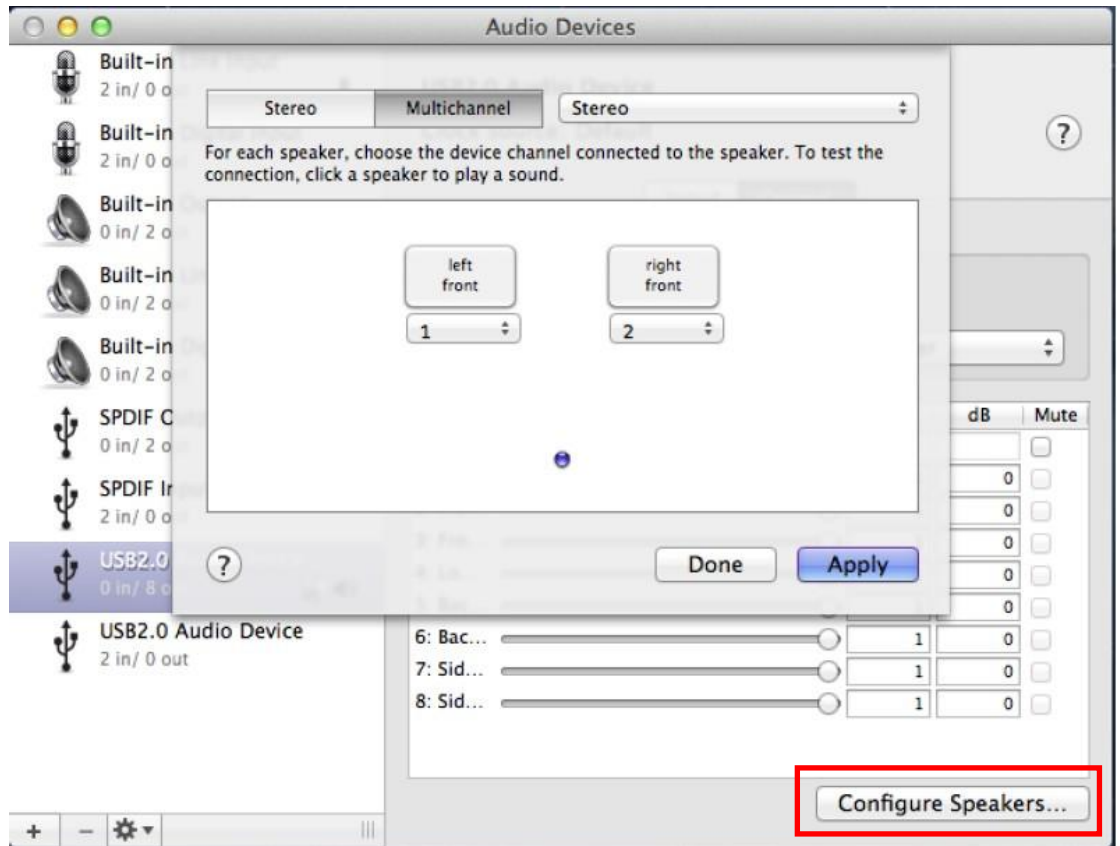




aim Inc.

8F-7, No. 351, Sec. 2, ZhongShan Rd., ZhongHe Dist.,  
New Taipei City 23504, Taiwan (R.O.C.) <http://www.aimpor21.com>  
Tel : 886-2-3234-3370 Fax : 886-2-2226-0840

5. Choose Configure Speakers to do speaker configuration or channel testing.



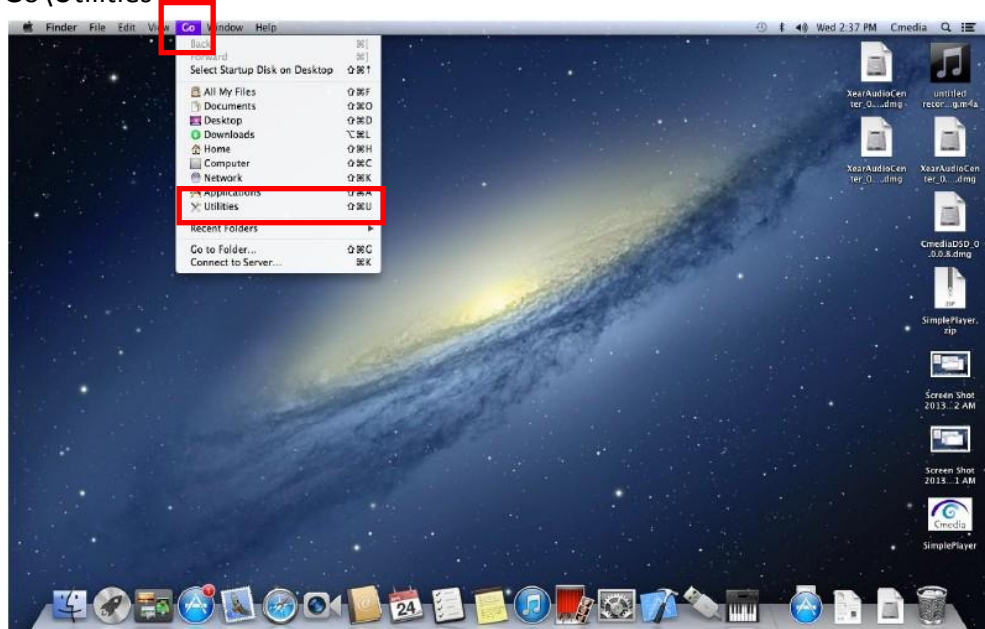


aim Inc.

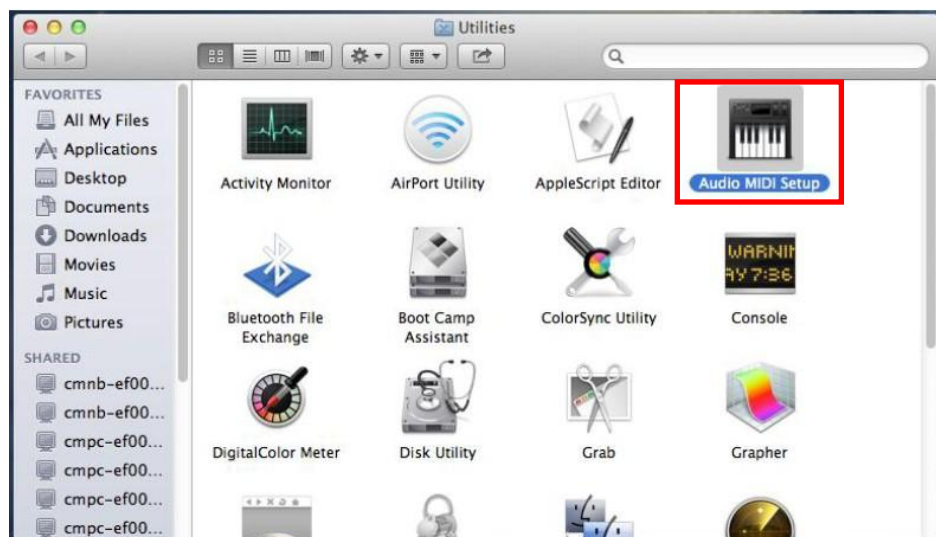
8F-7, No. 351, Sec. 2, ZhongShan Rd., ZhongHe Dist.,  
New Taipei City 23504, Taiwan (R.O.C.) <http://www.aimpor21.com>  
Tel : 886-2-3234-3370 Fax : 886-2-2226-0840

## How to setup audio output resolution?

### 1. Go\Utilities



### 2. Choose Audio MIDI Setup

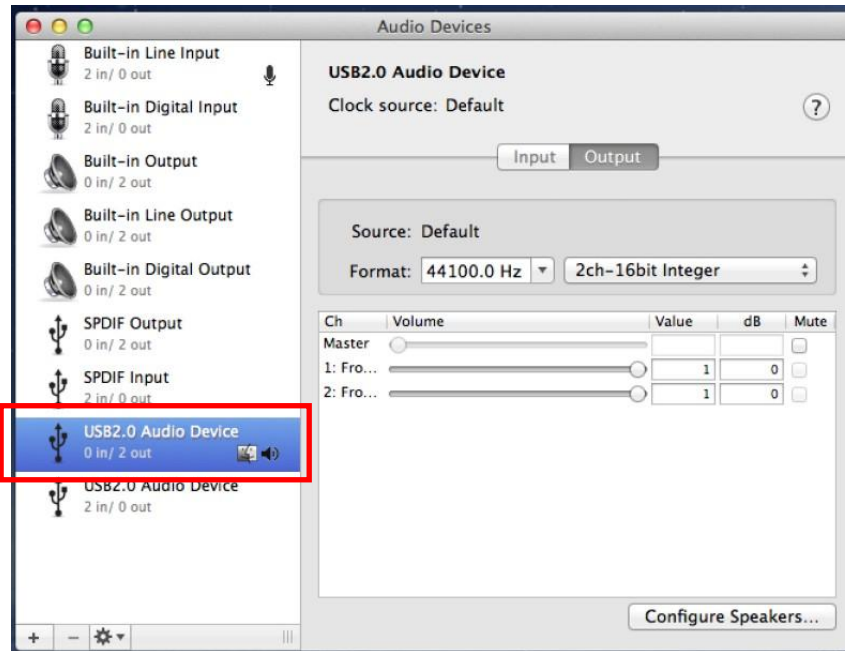




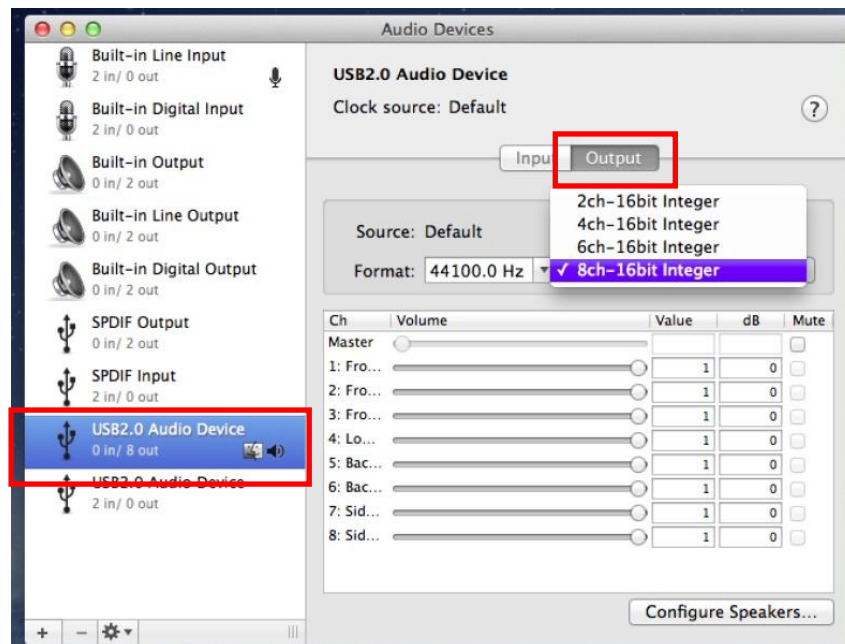
aim Inc.

8F-7, No. 351, Sec. 2, ZhongShan Rd., ZhongHe Dist.,  
New Taipei City 23504, Taiwan (R.O.C.) <http://www.aimpor21.com>  
Tel : 886-2-3234-3370 Fax : 886-2-2226-0840

3. Select audio device (such as USB2.0 Audio Device)



4. Choose 8ch-16bit Integer from Format item under Output selection



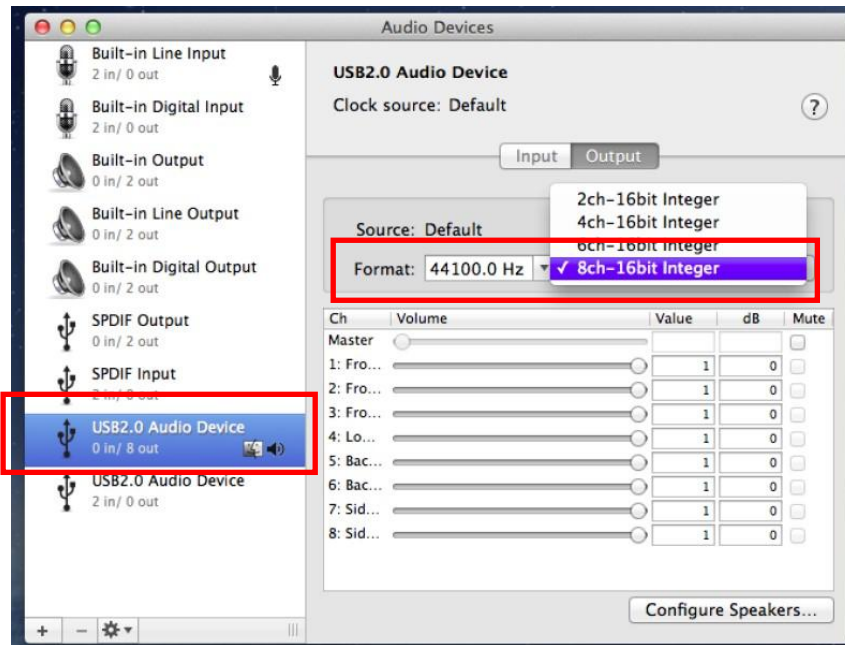




aim Inc.

8F-7, No. 351, Sec. 2, ZhongShan Rd., ZhongHe Dist.,  
New Taipei City 23504, Taiwan (R.O.C.) <http://www.aimpor21.com>  
Tel : 886-2-3234-3370 Fax : 886-2-2226-0840

5. Select the suitable format from Output. If you want to setup audio input resolution, choose the input device first, and follow this setup.





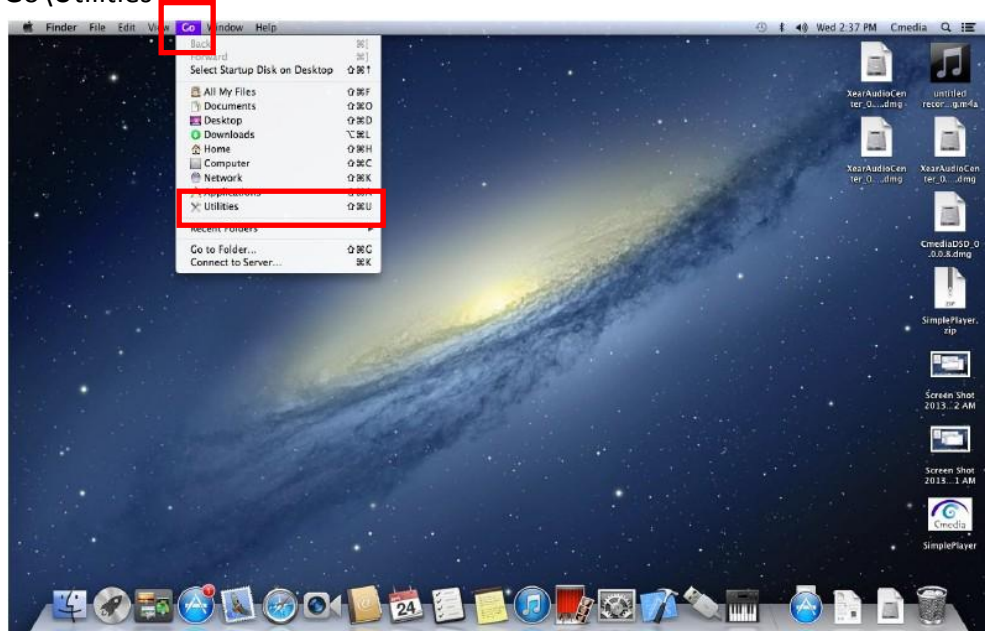


aim Inc.

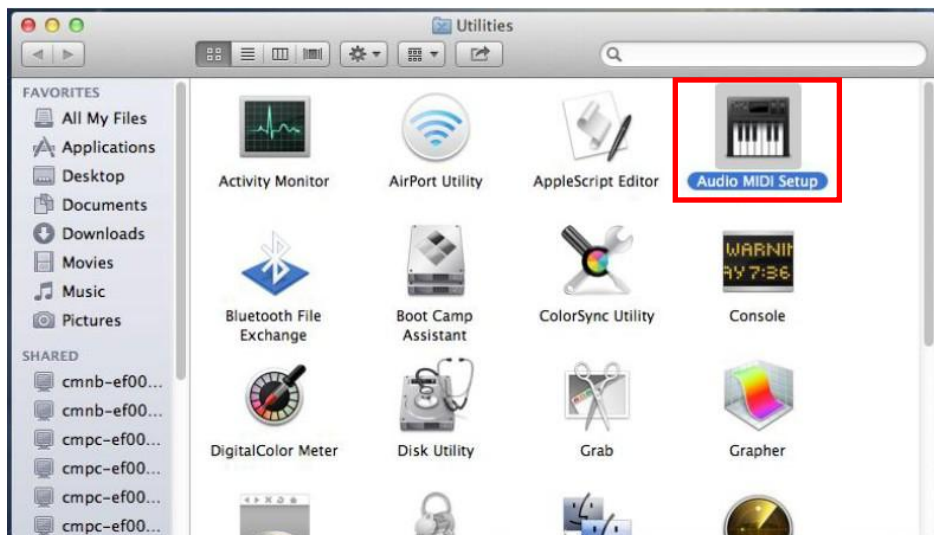
8F-7, No. 351, Sec. 2, ZhongShan Rd., ZhongHe Dist.,  
New Taipei City 23504, Taiwan (R.O.C.) <http://www.aimpor21.com>  
Tel : 886-2-3234-3370 Fax : 886-2-2226-0840

## How to setup optical output or input?

### 1. Go\Utilities



### 2. Choose Audio MIDI Setup

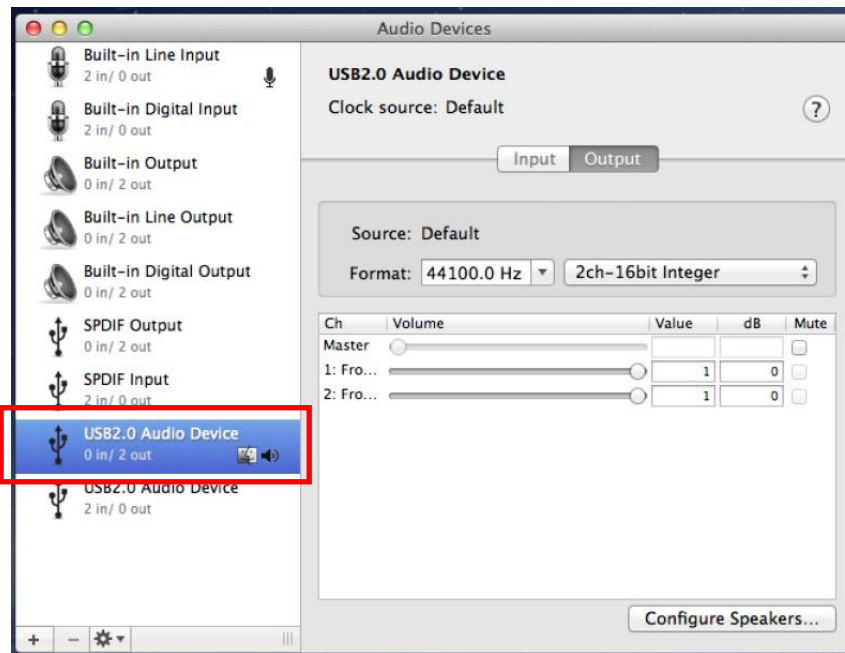




aim Inc.

8F-7, No. 351, Sec. 2, ZhongShan Rd., ZhongHe Dist.,  
New Taipei City 23504, Taiwan (R.O.C.) <http://www.aimpor21.com>  
Tel : 886-2-3234-3370 Fax : 886-2-2226-0840

3. Select audio device (such as USB2.0 Audio Device)



4. Select the SPDIF Output or SPDIF Input from the device list. You can also select the suitable resolution from the Format item.

